

THE MOOS

G U I L D E R L A N D P U B L I C L I B R A R Y



4TH ANNUAL READ OR TREAT



Date: Saturday, October 25
Time: 4-6PM
Location: Guilderland Public Library

Library Hours

- **Monday - Thursday:** 9:30am - 8pm
- **Friday:** 9:30am - 6pm
- **Saturday:** 9:30am - 5pm
- **Sunday:** 1 - 5pm

**Walgreens WALK-IN
FLU & COVID
VACCINATION CLINIC**
**October 1st
12 - 4PM**

1920s Murder Mystery Party



Oct. 18th | 12 p.m.
registration required
costumes encouraged



Pumpkin Explosion!!!!

How many rubber
bands
will it take?

SPEEDY SCIENCE

Drop in after school to do a quick
science experiment!

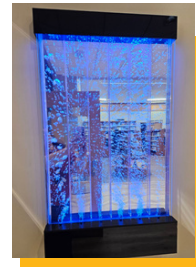
Wednesday October 15
3:30 - 4:30 pm
Grades K-12



DEA NATIONAL ^{Rx} TAKEBACK

**SATURDAY,
OCTOBER 25TH**
10 AM - 2 PM

*This will be a drive-through event held in
the Guilderland Public Library's auxiliary
parking lot.*



**FROM
THE
DESK OF
GREUFUS...**

Book Donation Drive to Benefit Grassroot Givers!

October 1st - 31st, 2025

Now accepting donations of new or like-new:

- Adult paperback & hardcover books
- Current adult biographies, self-help, cookbooks, and history books
- Children's books of all types



THE
GREAT
GIVE
BACK

Grassroot Givers



We firmly believe that everyone deserves a place where they feel welcome, and we are continually working to ensure Guilderland Public Library is that space. With generous support from **Bring On The Spectrum**, we have added new inclusive resources designed to make the library more accessible for all.

Our new tools include finger fidgets and other interactive items, as well as flexible seating options for activities. These resources aren't just for neurodivergent individuals; they are available to any patron looking to engage with the library in a way that feels comfortable and accessible. We invite you to utilize these tools on your next visit!

Thank you B.O.T.S!



OCTOBER 2025

SKY FRIENDS STORYTIME

Oct. 1, 8, 15, 22, & 29 | 10:30 - 11:30AM
Birth - 5 years, with caregiver



LITTLES LOUNGE & STORYTIME

Oct. 2, 9, 16, 23, & 30 | 10:30 - 11:15AM
Birth - 2 years, with caregiver



MUSIC & MOVEMENT

Oct. 3, 17, & 31 | 10:30 - 11AM
Best for 2-5 year olds, siblings welcome



FAMILY STORYTIME

Oct. 7, 14, 21, & 28 | 10:30 - 11:30AM
Birth - 5 years, with caregiver



YOUTH PROGRAMS

- | | |
|-------|---|
| 10/6 | <ul style="list-style-type: none"> 10:30 - 11AM Yoga for Littles 11:15 - 11:45AM Yoga for Littles |
| 10/10 | <ul style="list-style-type: none"> 10:30 - 11:30AM GPL Goes to Town: Guilderland Fire Department [R] 2:30 - 4:30PM Family Board Games |
| 10/14 | <ul style="list-style-type: none"> 6:30 - 7PM Juice & Jammies Nighttime Storytime |
| 10/15 | <ul style="list-style-type: none"> 3:30 - 4:30PM Speedy Science: Pumpkin Explosion |
| 10/18 | <ul style="list-style-type: none"> 1 - 2PM Origami Club |
| 10/20 | <ul style="list-style-type: none"> 2 - 4PM Boo & Glue Family Fall Crafts |
| 10/23 | <ul style="list-style-type: none"> 4 - 4:45PM Hobby Hub: Learn to Cook [R] |
| 10/24 | <ul style="list-style-type: none"> 3:30 - 4:30PM First Grade Slime Party! [R] |
| 10/25 | <ul style="list-style-type: none"> 4- 6PM READ OR TREAT!! |
| 10/27 | <ul style="list-style-type: none"> 5:30 - 6:45PM Kids Create! Ghostly Line Edition [R] |



October 24
Registration Required
First Graders Only

PAWS 2 READ

OCTOBER 4TH & 11TH | 11AM - 12PM
OCTOBER 16TH, 23RD, 28TH & 30TH | 3 - 4PM



GRADES K-5

CHECK-IN @ CHILDREN'S DESK

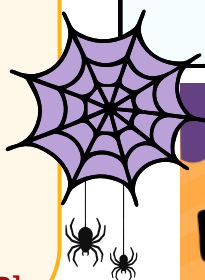
Recurring Drop-In Programs

LEGO FREE PLAY
October 8th
3 - 6PM

LET'S BUILD
October 13th
1 - 4PM

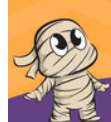


YOUTH CHESS
October 25th
11AM - 12PM



NOT-SO-SPOOKY STORYTIME WEEK

Tuesday-Friday
October 28-31



GUILDERLAND
PUBLIC LIBRARY

Come in Costume!



FOR 0-5 YEAR OLDS
COSTUMES WELCOME!



To learn more or register for an event, scan QR code or visit guilderlandlibrary.org



ADULT PROGRAMS

10/1	• 6:30 - 7:30PM Social Security Made Easy [R]
10/2	• 10 - 11AM Game Time [R] • 6:30 - 7:30PM Let's Create a Video Game [R]
10/4	• 10AM - 4:30PM Jigsaw Puzzle Along
10/7	• 1 - 1:30PM 30-Minute Mindfulness [R] • 6:30 - 7:30PM The Motion Picture Division
10/9	• 6:15 - 7:15PM Cleaning 101 [R] • 6:30 - 7:30PM Let's Create a Video Game [R]
10/10	• 2 - 4PM Crafternoon: Fox Art [R]
10/12	• 1 - 4:45PM Silent Book Club Silent Party
10/15	• 6 - 7:30PM Getting Started with Your Family History [R]
10/16	• 6 - 8PM Horror Movie Trivia [R]
10/18	• 12 - 4PM 1920s Murder Mystery Party [R]
10/21	• 6 - 6:30PM 30-Minute Mindfulness [R]
10/22	• 6:15 - 7:30PM Creepy Crafting Halloween Wreaths [R]
10/29	• 6:30 - 7:30PM Knee Pain 101: Proven PT Solutions that Work [R]
10/30	• 6:15 - 7:30PM Rustic Pumpkin Blooms [R]

**WALK-IN
FLU & COVID VACCINATION CLINIC**
October 1st | 12 - 4PM by Walgreens

RECURRING ADULT PROGRAMS

Seniors Connect!

October 1st, 8th, 15th, 22nd, & 29th | 11AM - 1PM

Technology Help

October 6th & 20th | 5:45 - 7:30PM

**TRICK
OR
TREAT**

Libby & Hoopla Help

October 6th | 1 - 2PM

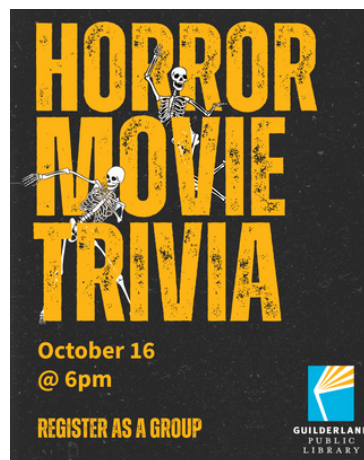
Boo!

Drop-In Knit & Stitch

October 7th, 14th, 21st, & 28th | 10 - 11:30AM

Drop-In Genealogy Assistance

October 8th | 5:30 - 7:30PM



To learn more or register for an event, scan QR code or visit guildlerlandlibrary.org



TEEN. ADVISORY. COMMUNITY. OUTREACH.

GRADES 6-12

GROUP MEETING



TACOS VOLUNTEER MEETING

October 7th | 6 - 7PM

Earn volunteer credit by participating in our Teen Advisory Community Outreach group! Give input on books, programs, and more. [R]

10/8: 3 - 6PM **LEGO Free Play**

10/13: 1 - 4PM **Let's Build**

10/15: 3:30 - 4: 30PM **Speedy Science: Pumpkin Explosion**

10/16: 6 - 8PM **Horror Movie Trivia** [R]

10/18: 1 - 2PM **Origami Club**

10/25: 11AM - 12PM **Youth Chess**



To learn more or register for an event, scan QR code or visit guilderlandlibrary.org

GPL TEENS!

GRADES 6-12

TEEN

**TRAVEL-OR-TREAT
TRY CANDY FROM
AROUND THE WORLD**

OCTOBER 20TH
@6 PM

GRADES 6-12

CHECK IT OUT!

TEAM MEMBER RECOMMENDATION



CAROLINE
Marketing
Specialist

Recommendation:
Dark Matter
By Blake Crouch



"If you love fast-paced thrillers with a mind-bending twist, pick up *Dark Matter* by Blake Crouch. It's a gripping mix of science and suspense. Imagine being kidnapped and waking up in a world that isn't your own. This book asks the big questions about identity, love, and the 'what-ifs' of the multiverse."

LIBRARY OF THINGS SPOTLIGHT

Verilux
HappyLight



Are you ready to "fall back" when Daylight Savings ends next month? As the days get shorter, many folks struggle with lower energy, and your routine or your sleep schedule might feel a little off. That is why we have added a HappyLight to our Library of Things! These popular lights are "designed to boost your mood, improve your sleep, enhance your focus, and kickstart your energy" by "emitting a bright white light that mimics sunlight."

It even comes with a timer, and the ability to adjust the brightness and the color/temperature of the light. Try it out today!




Guilderland Reads: GPL Book Clubs



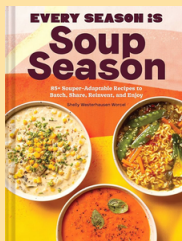

Silent Book Club Global Readathon!

October 10-11

Silent Book Club Silent Party!
October 12 @ 1 - 4:45PM

Silent
BOOK CLUB

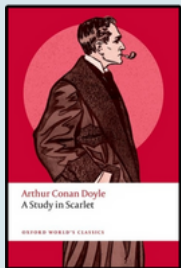
Read It & Eat Cookbook Club



Wednesday, October 8
@6:15PM
Ages 18+

The featured cookbook for October is **Every Season is Soup Season** by Shelly Westerhausen Worcel. Register at the Information Desk.

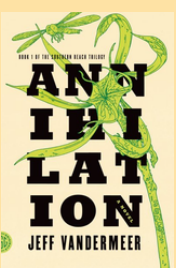
Whodunit Mystery Book Club



Thursday, October 9 @6:30PM
Ages 18+

Do you have what it takes to crack the case? Find out at the Whodunit Mystery Book Club! This month, we are reading **A Study in Scarlet** by Arthur Conan Doyle.

Realm Explorers Book Club

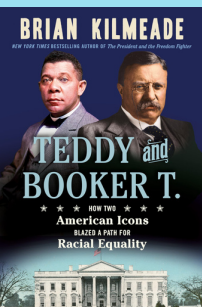


Saturday, October 11 @11:00AM
Ages 16+

Discussing science fiction and fantasy novels. Titles include Adult/Young Adult science fiction and fantasy books as well as graphic novels.

This month we're reading **Annihilation** by Jeff Vandermeer

Night Owls Book Club



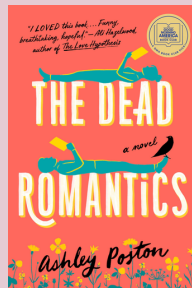
Monday, October 13 @6:30PM
Ages 18+

Reading the most talked-about fiction and nonfiction titles. Currently reading **Teddy and Booker T.** by Brian Kilmeade

Not a Night Owl? Join the Day Larks on October 15 at 2pm

Hopeless Romantics Book Club

Wednesday, October 15 @6:30PM
Ages 18+



HRBC is a romance book club that meets to discuss swoon-worthy romance titles. This book club will cover a wide variety of subgenres from historical romance to contemporary to historical to paranormal romance!

This month we're discussing **The Dead Romantics** by Ashley Poston

Fright Club Book Discussion Group

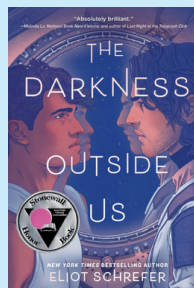


Tuesday, October 28 @6:30PM
Ages 18+

Join us each month for the best of Horror and Thrillers.

This month we're reading **Just After Sunset** by Stephen King.

Rainbow Reads Book Club



Tuesday, October 21 @6:30PM
Ages 16+

Rainbow Reads meets monthly to discuss LGBTQIA+ authors and queer-focused literature.

This month we're reading **The Darkness Outside Us** by Eliot Schrefer

Silent Book Club

Sunday, October 26 @1:30PM
Ages 18+

Give yourself permission to read. Meet by the fireplace!

How to Get Your Book Club Books

For adult book clubs, copies of books are available for checkout at the Information Desk while supplies last or digital copies can be borrowed from Libby.



Learn more about GPL's book clubs at
guilderlandlibrary.org/book-discussion

BANNED BOOKS WEEK[®] OCT. 5-11, 2025



might just open your mind in unexpected ways. **Show your support for libraries and the right to read by picking up your special edition “Censorship is so 1984” library card at the circulation desk, October 5th - 15th, while supplies last!** Stop by the adult info desk for a Banned Books Week scavenger hunt!

Join us as we celebrate the freedom to read and the power of diverse voices. Each year, Banned Books Week highlights the importance of defending our right to access literature that challenges, informs, and inspires us. We invite you to explore the books that have faced censorship, learn about the ongoing fight for intellectual freedom, and discover new titles that



LIBRARY BUSINESS

- GPL Board of Trustees Personnel Committee Meeting**
October 2nd | 6:30 - 7:30PM
- GPL Board of Trustees Long Range Plan Committee Meeting**
October 7 | 5:30 - 6:30PM
- GPL Board of Trustees Governance Committee Meeting**
October 9th | 5:30 - 6:00PM
- GPL Board of Trustees Facilities Committee Meeting**
October 9 | 6:00 - 7:00PM
- GPL Board of Trustees Finance Committee Meeting**
October 14th | 5 - 5:30PM
- GPL Board of Trustees Monthly Business Meeting**
October 16th | 6PM



COMMUNITY INTEREST

- Guilderland Guitar Group**
October 15th & 29th | 6:30 - 8PM
- Normanskill Strummers**
Ukulele Group
October 16th | 6 - 8PM
- Art Exhibition**
Albany Artists Group
Reception: October 6th | 6 - 8PM
- Display Cases**
Guilderland's One Room Schoolhouses
Guilderland Historical Society
- America Red Cross Blood Drive**
October 10th | 12 - 5PM
- Capital District Knitting Guild**
October 13th | 6 - 8PM



Guilderland Historical Society GPL Display Cases:

Guilderland's One-Room Schoolhouses

The exhibit this year contains photos and artifacts related to the—14!—School Districts that once represented each hamlet in the Town of Guilderland, prior to centralization. From photos of the buildings to lunch “pails” and a genuine school bell to school books, you can step back in time and consider how students were once educated in New York State. One of the schools, the Cobblestone Schoolhouse of District #6 on Rte. 146 in Guilderland Center is on the National Register of Historic Places, and still garners admiring glances for its cobblestone construction, completed by the talented 24-year-old Robert L. Zeh in 1860. There’s a surprise announcement about the schoolhouse included in the display!

Photos show that the pot-bellied coal stove and blackboards were ubiquitous, but the one-room schoolhouse was a valued part of the community, yet one more way in which communities were held together. Be sure to take a look at the way it used to be in Guilderland and much of the United States in an earlier, less complicated era, when our rural roots determined who we were as a country.

- Carol Hamblin, Guilderland Historical Society



Subscribe to our newsletter by scanning the QR code here!

