



# GUILDERLAND PUBLIC LIBRARY

VOLUME 30, ISSUE 11

GUILDERLANDLIBRARY.ORG

MAY 2023

## BUDGET & BOARD CANDIDATE VOTE

### GUILDERLAND PUBLIC LIBRARY ANNUAL ELECTION

Tuesday, May 16

7 am–9 pm

Guilderland Elementary Schools

*This year, there are two open seats on the Guilderland Public Library Board of Trustees for five-year terms. The following candidates appear on the 2023 ballot.*



#### WILLIAM COONEY

A Lansingburgh native and Guilderland resident for the past nine years, William Cooney holds a BA in History from Siena College, and a J.D./MBA from Georgetown University.

Mr. Cooney's broad experience base includes:

- Business Manager and Attorney at GE Power, both in Schenectady and overseas

- Corporate and Commercial Attorney in Washington, D.C.
- Captain in the US Armored Cavalry in Germany

His volunteer experience includes Guilderland PTA; Guilderland T-Ball and Youth Soccer; NYS Military History Museum; and various voter support activities.

#### **Q: What role have libraries played in your life? How have you benefited most from GPL?**

A: I grew up reading history and biography books from the Troy Public Library and writing history term papers at the Siena and SUNY Albany libraries. GPL, especially the childrens' library and activities, has been an important center for my family since we moved here. We truly enjoy the wealth of learning available through the GPL, from books, to performances, to lectures and displays of local artists.

#### **Q: What was the last good book you read?**

A: *The Star-Gazer*, a 1940 biographical novel of the life and times of Galileo, by Zsolt De Harsanyi.

#### **Q: Why are you interested in serving as a GPL Board of Trustee?**

A: I want to play a part in making sure that GPL continues its important role in the Guilderland community as a place where citizens can get a wide variety of books, learn new things, exchange ideas, enjoy performances and local arts and get to know each other. I will look work to see that the GPL budget and spending are well managed within the role that the citizens of Guilderland want their library to play.

#### CORIE DUGAS

Current GPL Interim Trustee Corie Dugas won a one-year term to our Board in 2022 to fill a vacancy, and is seeking a full term. She has resided in Guilderland for five years.

Ms. Dugas holds a BA in English-Creative Writing from Baker University, and an MLIS from the University of Missouri. She brings a wealth of professional and volunteer library experience, including:

- Executive Director, NELLCO Law Library Consortium, Inc.,
- Executive Director, MALLCO Law Library Consortium,
- Assistant Professor of Legal Research/Head of Outreach and Access Services, Saint Louis University School of Law
- Upper Hudson Library System Trustee

#### **Q: What role have libraries played in your life? How have you benefited most from GPL?**

A: I've been a library user for as long as I can remember. As a child I went to story hour and checked out stacks of picture books. In school, I used the public library for research and a quiet place to study. I loved the library so much that I became a librarian. Even though I no longer work in a library, I love maintaining a connection to my public library. I am in Guilderland Public Library at least once a week checking out books or attending programs. I also get tons of audiobooks through Libby and Hoopla and have my headphones on listening to books all the time.

#### **Q: What was the last good book you read?**

A: I read a ton of mysteries and thrillers, but my last five-star book was *Sign Here* by Claudia Lux. It was an original, inventive read.

#### **Q: Why are you interested in serving as a GPL Board of Trustee?**

A: Through and through, I am a huge public library advocate and patron. I joined the GPL Board of Trustees last year to complete a vacated term and have enjoyed being a part of the Board. Guilderland is a diverse and vibrant community, and I appreciate having the opportunity to help shape the future of the library so that it serves the needs of the community. The programs, services, and resources the library provides are top tier, and I hope that my role as Trustee helps these initiatives continue to thrive.

**The proposed 2023-2024 budget includes a 2.68% tax levy increase within the mandated salary cap. Labor and utility costs have risen slightly, while collection costs remain stable. Please see page 2 for budget details.**



## PROPOSED 2023-2024 BUDGET

	2022-2023	2023-2024
<b>EXPENSES</b>		
<b>Library Materials</b>	\$ 395,000	\$ 395,000
<b>Salaries &amp; Benefits</b>	2,996,750	3,101,735
<b>Operations</b>		
Utilities	70,000	80,000
Office/Custodial Supplies	55,000	40,800
Postage	4,000	5,400
Insurance	32,800	35,200
Taxes (water & sewer)	10,000	6,000
Staff Development	15,000	15,000
Memberships	3,000	3,000
Special Programs	30,250	36,000
Building & Equipment		
Maintenance	52,000	40,100
Auditing	20,000	20,000
Business Operations	22,500	17,600
Professional Services	37,000	37,000
Miscellaneous	54,000	47,040
Circulation System	42,000	40,000
IT / Hardware & Software	65,000	79,460
Capital Improvements	270,165	291,545
<b>Total Operations</b>	<b>782,715</b>	<b>794,145</b>
<b>TOTAL EXPENSES</b>	<b>4,174,465</b>	<b>4,290,880</b>
<b>INCOME</b>		
Fees (passports, lost items, etc.)	4,700	8,880
Interest	3,000	3,000
Gifts, Grants & Donations	2,500	3,000
<b>TOTAL INCOME</b>	<b>10,200</b>	<b>14,880</b>
<b>BUDGET</b>	<b>4,174,465</b>	<b>4,290,880</b>
<b>MINUS INCOME</b>	<b>10,200</b>	<b>14,880</b>
<b>EQUALS TAX LEVY</b>	<b>4,164,265</b>	<b>4,276,000</b>



### Health Chromebook Available

Need to do some health information research; or have a telemedicine appointment—but no computer to do either of these privately? Consider borrowing our **Consumer Health Chromebook**, offered through a partnership

between Capital District Library Council (CDLC) and the Network of the National Library of Medicine. You can use one in the Library for the entire day, with a Logitech headset and a brand-new set of earbuds (these you can keep). You can also reserve one of our study rooms for up to four hours of privacy.

Once logged in, you'll be at the CDLC's Consumer Health Information LibGuide home page, which provides links to vetted medical and health resources. When you log out of your session or close the Chromebook, all browser history, downloads, and files are removed.

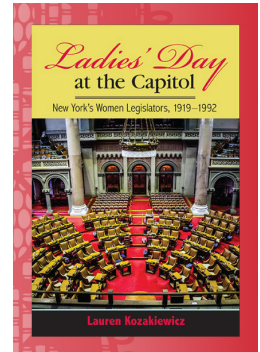
The Chromebook/headset will be available to borrow from the Adult Information Desk. Stop by anytime, or call us at 518-456-2400 ext. 3 to ask about availability.

## ADULT PROGRAMS &amp; RESOURCES

### Ladies' Day at the Capitol: Author Talk by Lauren Kozakiewicz

Wednesday, May 3 @ 6 pm  
(rescheduled)

Ladies' Day at the Capitol integrates for the first time the history of New York's women lawmakers with the larger story of New York State politics. Through extensive research and interviews, Lauren Kozakiewicz documents New York women's actions as elected officials between 1919 and 1992, and explores how gendered ideas affected their careers and ability to represent women's voices in government. There will be a Q & A session following this informative presentation.



### Open Mic Café

Friday, May 5 @ 5:30-7 pm  
(rescheduled)

Teens & Adults

Our love of poetry extends beyond *National Poetry Month* in April to encompass the entire year! As our final **Beanstack Reads & Roasts Book Challenge** event, we're hosting an Open Mic Café.

Everyone is welcome to read their own work, or something they enjoy from the Library's collection (5-10 minutes max.) If you signed up for Reads & Roasts, you can also get that final bingo card badge. All are welcome to enjoy an evening sharing favorite poetic works.

### BOOK DISCUSSION GROUPS [R]

#### Night Owls Book Club

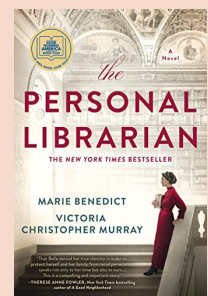
Mondays @ 7:30 pm

Hybrid: in-person or virtual

Led by Librarian Maura Powers-Smith. Reading the most talked-about fiction and nonfiction titles.

**May 8: *The Personal Librarian***, by Marie Benedict and Victoria Christopher Murray

**June 12: *South to America: A Journey Below the Mason-Dixon to Understand the Soul of a Nation***, by Imani Perry



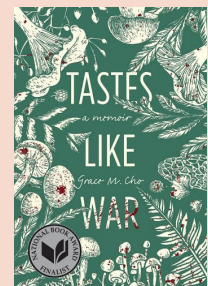
#### Memoirs in the Morning

Wednesdays @ 10:30 am

In-Person

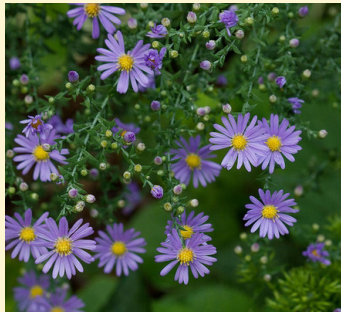
Led by Librarian Josalyn Wilder. Reading the best current biographies and memoirs.

**May 31: *Tastes Like War: A Memoir***, by Grace Cho





## ADULT PROGRAMS &amp; RESOURCES



### How to Advocate for Native Plants in Your Community

**Tuesday, May 9  
@ 6:30 pm**

Towns and HOAs can do much more to support pollinators than just planting some milkweed. Discover strategies for getting your town or

homeowners association excited about native plants and pollinators! Learn how to think like a town or HOA so you can make your community more pollinator-friendly! **[R]**

*This program is presented by Jennifer Michelle, founder of GreenTown Consulting. This organization helps towns become pollinator-friendly by updating their policies and codes, educating their teams, and setting achievable goals.*



### Plant Exchange

**Wednesday, May 17 @ 6 pm**

Thinning out your perennials? Want to freshen up your houseplants? Bring them in and trade them for something

new, while chatting with fellow plant enthusiast! Both garden and houseplants are welcome. Bring up to eight plants in pots to the swap. Participants will take turns picking out a new plant for each one they brought. **[R]**



### Easiest Houseplants Ever, with Style! A Zoom Lecture with Tovah Martin

**Thursday, May 18  
@ 6:30 pm  
Virtual**

Looking for the perfect green match for your home? No matter what your home environment

offers, we've got you covered with plant suggestions! The goal is to find botanical companions that will help make your life ultra-beautiful. Dense with design ideas for wannabe indoor gardeners of all tastes, and crammed with firsthand wisdom for care and cultivation, this lecture covers all the bases! Award-winning author Tovah Martin is an accredited Organic Land Care Professional through NOFA, and an award-winning member of the Garden Club of America. She has been featured in several national magazines, and on television and radio shows. **[R]**

### Poetry with Parameters: A Four-Part Workshop

**Sundays Beginning May 21  
@ 1 pm; Also June 4, 11, 25  
Adults and Older Teens**

Poet and Guilderland resident Susan Conninos will present a four-part workshop on poetry pegged to constrained forms, including the anagram, the sonnenzie, the place-as-person poem (or, the geographical personification poem).

Constrained poetry asks us to be resourceful within certain parameters. It invites us to break through some of our barriers as poets, often helping us to create unexpectedly funnier or fuller poems. Participants will examine representative works, and experiment with exercises to help craft your own constrained poems. **[R]**



**Poetry with Parameters**  
with Susan Conninos



**SHENA MCAULIFFE**  
novelist & essayist

### Author Reading: Shena McAuliffe

**Wednesday, May 24 @ 6 pm**

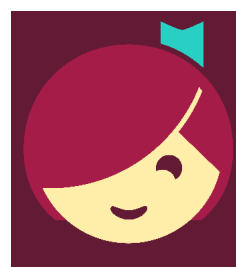
Please join us during Short Story Month for a reading from a new collection, ***We Are a Teeming Wilderness***, by prize-winning and widely-published Novelist and Essayist, Shena McAuliffe. She is the author ***The Good Echo: A Novel*** and ***Glass Light***

***Electricity: Essays***. McAuliffe holds a PhD in Literature and Creative Writing, and is currently an Assistant Professor of English at Union College.

### Movie Night: Ticket to Paradise

**Monday, May 15 @ 6 pm**

The dynamic duo of Julia Roberts and George Clooney team up once again for this delightful 2022 romantic comedy. A divorced couple travels to Bali to sabotage the impending wedding of their daughter, ostensibly to prevent her from making the same mistake they made 25 years ago. **Rated PG-13.**



### Getting Started with Libby

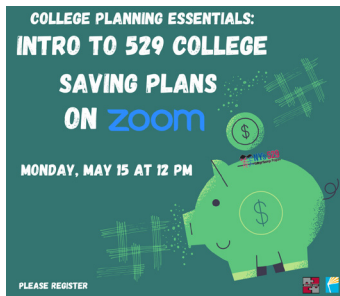
**Wednesday, May 17 @ 2 pm  
Virtual**

Want to know how to borrow ebooks and audiobooks? Get to know Libby! This online session, offered monthly and taught by the experts at Overdrive, is the perfect introduction to accessing these digital resources. **[R]**

## ADULT PROGRAMS &amp; RESOURCES

**College Planning Essentials: Intro to 529 College Savings Plans****Monday, May 15 @ 12 pm Virtual**

If you have a child or grandchild heading to college, the facts are sobering: on average, college tuition tends to increase by about 8% per year. An 8% college inflation rate means that *the cost of college doubles every nine years*. One of the best ways to help defer a portion of this cost is by setting up a tax-advantaged 529 plan—or College Savings Plan—on behalf of your future graduate. In this Zoom program, offered in collaboration with Bryant Asset Management in Slingerlands, you'll also learn how the SECURE Act 2.0, passed by Congress in late 2022, has now added the ability to roll over unused 529 Funds into a Roth IRA. [R]

**Social Security: Strategies for a Better Retirement****Wednesday, May 17 @ 6 pm**

There is no "one-size-fits-all approach" to collecting Social Security benefits. If you're age 55-70 and retirement is in your future, this in-person program will

provide you with information about how to make a more informed claiming decision. Some topics to be discussed:

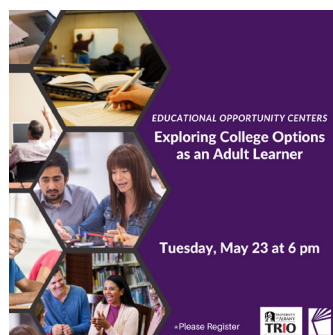
- When is the best time to collect Social Security?
- Can I collect benefits if I'm still working?
- Is it better to collect benefits sooner rather than later?
- How are my Social Security benefits calculated?
- Should my spouse collect my benefits, or their own?

Inform yourself to make the best possible decision!

Presenter John N. Kalil, Jr., LUTCF is a Financial Advisor and the Founder and President of Retirement Solutions, LLC. [R]

**Exploring College Options for Adult Learners****Tuesday, May 23 @ 6 pm**

Interested in starting or restarting a degree? You're never too old to pursue higher education! We'll cover types of colleges, degree programs, course modalities, college application requirements, costs, and financial aid for adult learners. Presented by Heather Murphy, Associate Director in the Office of Professional, Adult, and Continuing Knowledge at University at Albany.

**Mothers & Children: A Mother's Day Concert of Hope and Peace, with Jacqueline Schwab****Sunday, May 14 @ 2 pm**

**Family / All Ages**  
Renowned Pianist Jacqueline Schwab returns to GPL for a special **Mother's Day performance** filled with songs of hope and peace!



As a solo pianist, Ms. Schwab's evocative artistry infuses the soundtracks of several Ken Burns films, and various PBS documentaries and special concerts. She has performed at the White House; on A Prairie Home Companion on CBS' Late Show with David Letterman; and in almost every state of the country. She enjoys sharing her wide repertoire of familiar old tunes—what Mark Twain would have called "remembrances"—and speaking about the power of music to transport us to our own past, or on to new horizons. *This promises to be a special afternoon!*

## YOUTH PROGRAMS &amp; RESOURCES

**Storytimes****Through May 25**

Let's read books, sing songs and get moving together! Caregivers are required to stay with their child(ren) the entire time. Please choose only ONE option per week:

- **Toddlers**—18-36 months—**Tuesdays @ 10:30 am**
- **Families**—Birth-5 years old—**Wednesdays @ 10:30 am**
- **Preschoolers**—3-5 years old—**Thursdays @ 10:30 am**

**Project Picture Book: Spring****Thursday, May 11 @ 3:30 pm Grades K-2**

Join us after school for a fun read-aloud and hands on learning activity related to Spring! Please dress for a mess! [R]

**LEGO Free Play****Wednesday, May 17 @ 3-6 pm****Family / All Ages**

Our popular freestyle LEGO session is back! Use your imagination to construct your best creation yet!



## YOUTH PROGRAMS &amp; RESOURCES



### Lessons in the Circle of Life: Meet a Rooster and a Hen (Part One)

**Tuesday, May 16  
@ 4-5:30 pm  
Early Childhood-Grade 5  
& Their Families**

In this first presentation, educator George Steele will visit us with a hen and a rooster to discuss the care, behavior, and incubation of chickens. We'll be setting up an incubator with eggs right

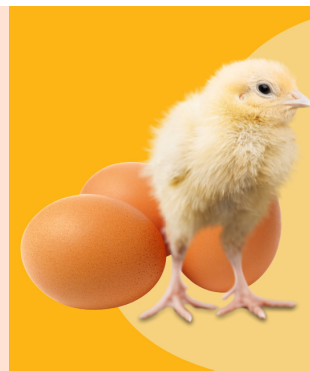
here in the Children's Library! Over the next 21 days, you can observe the eggs as they stay safe and warm inside the incubator. *Space is limited. Please register each attendee individually. Register for Parts One and Two separately.* [R]

### Lessons in the Circle of Life: Chicken Egg Incubation (Part Two)

**Monday, May 22  
@ 4-5:30 pm  
Early Childhood-Grade 5  
& Their Families**

In this second presentation, educator George Steele will clue us all in to what's been happening inside of the eggs that have been kept safe and warm inside their incubator.

You'll have a chance to see how the chicks have grown using a process called "candling." George will discuss the final growth and hatching process of the chicks, which we expect to take place around June 6-7. Once the chicks hatch, they go home with George to join his flock. *Space is limited.* [R]



### Art Room

**Wednesday,  
May 24  
@ 3:30-6:30 pm  
Family / All Ages**  
Bring your creativity to the Library! Drop in anytime and use our variety of arts and crafts supplies to create your own masterpiece.



### LIBRARY HOURS

**Monday—Thursday.....9:30 am–9 pm  
Friday.....9:30 am–6 pm  
Saturday.....9:30 am–5 pm  
Sunday.....1-5 pm**

All programs are in-person, unless otherwise noted.

[R] = Register on the Events tab of our website.

### ON THE CALENDAR



**LIBRARY CLOSED  
Memorial Day Weekend:  
Saturday, May 27  
Sunday, May 28  
Monday, May 29**

**Drop-In Playtime** - ages Birth-5 with a caregiver  
**Monday, May 1 @ 10:30-11:30 am**

**Drop-In Knit & Stitch**—Tuesdays, 10-11:30 am  
**Guilderland Library Foundation Meeting**  
**Thursday, May 4 @ 6:15 pm**

**Capital District Knitting Guild**  
**Monday, May 8 @ 6-8 pm**—all skill levels

**Guilderland CSD High School Art Exhibition**—  
**May 5-26—Reception: Wed. 5/10 @ 3-5 pm**

**Drop-In Genealogy with Lisa Dougherty**  
**Wednesday, May 10 @ 6-8 pm**

**NEW Kid/Teen Discovery Pages**  
**Monday, May 15: Elementary**

**Tuesday, May 30: Teen**  
**American Red Cross Blood Drive**

**Tuesday, May 16 @ 1-6 pm**  
**GPL Board of Trustees Meeting**

**Thursday, May 18 @ 6 pm**

In-person and streamed on YouTube.  
Public commentary to: [pc@guilderlandlibrary.org](mailto:pc@guilderlandlibrary.org)

**NEW How Did You Find It? Podcast**

**Friday, May 19** on all major platforms



**BLOOD  
DRIVE**

**TEEN.  
ADVISORY.  
COMMUNITY.  
OUTREACH.  
MEETING**



**MAY 10 AT 6:30 PM**

**TEEN  
ADVISORY  
COMMUNITY  
OUTREACH  
MEETING**



**MAY 11  
AT 6:30 PM**

### Junior Teen Advisory Community Outreach (Jr. TACOs)

**Wednesday, May 10  
@ 6:30 pm  
Grades 6-8**

### Teen Advisory Community Outreach (TACOs)

**Thursday, May 11  
@ 6:30 pm  
Grades 9-12**

Calling all Middle and High Schoolers: join the TACOs! Here's an opportunity to earn volunteer credit in a fun way by giving us your input on books, programs, and more. Our goal is to make GPL your #1 hangout

spot. Come solo, or bring a friend—we value your opinions and participation! [R]