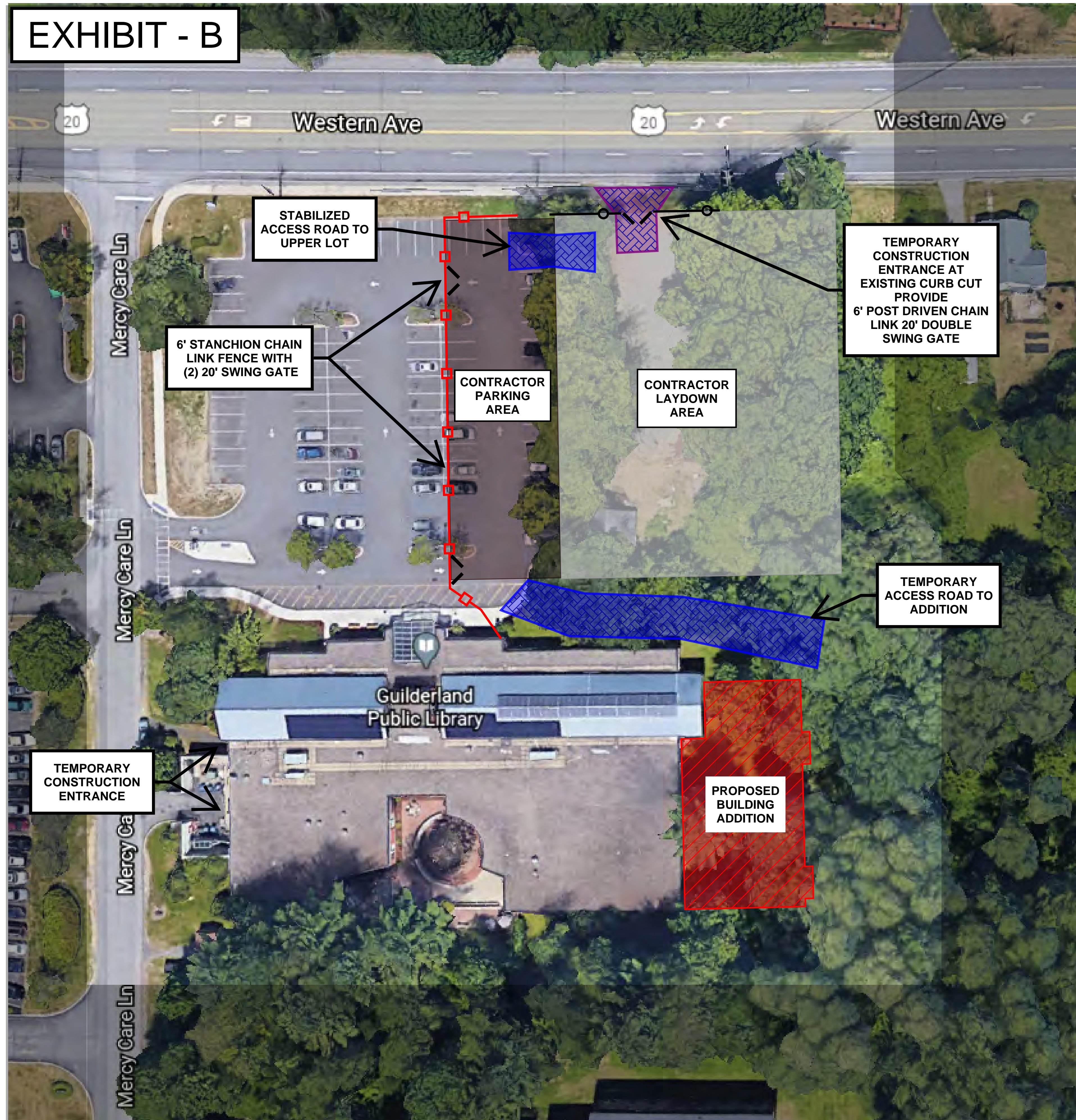


### EXHIBIT - B



#### LEGEND

- Contractor Laydown Area
- Stabilized Temporary Construction Road
- Stabilized Temporary Construction Entrance
- 6' Stanchion Chain Link Fence
- 6' Post Driven Chain Link Fence
- 20' Swing Gate ( 2 EA)
- Temp. Chemical Toilets (3 ea.)

#### Notes:

- (1) General Contractor to maintain fencing for duration of project.
- (2) Coordinate fence installation timing with site utility work.
- (3) Coordinate temporary fencing install with work of all contractors.
- (4) Site contractor to remove and restore grounds at completion and/or owner acceptance.
- (5) Refer to Special Provisions and Multiple Contract Summary further details.